

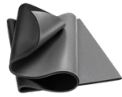
# VEHICLE SOUNDPROOFING PACKAGES

## DAMPLIFIER PRO™ + LUXURY LINER PRO™ INSTALLATION INSTRUCTIONS

### WHAT COMES IN THE KIT?



+



+



DAMPLIFIER PRO™

LUXURY LINER PRO™

HAND ROLLER  
(OPTIONAL ADD-ON)

### INSTALLATION TOOLS (NOT INCLUDED)

1



SHARP UTILITY KNIFE

2



GLOVES

3



ALCOHOL

4



MEASURING TAPE

### ADHESIVE OPTIONS (NOT INCLUDED)



CONTACT SPRAY  
ADHESIVE

OR



SUPER STRONG  
DOUBLE SIDED TAPE

OR



DUAL LOCK™ RECLOSABLE  
FASTENER STRIPS

# VEHICLE SOUNDPROOFING PACKAGES

## DAMPLIFIER PRO™ + LUXURY LINER PRO™ INSTALLATION INSTRUCTIONS

### HOW TO INSTALL ([Watch Install Video](#))

- 1 Remove your door panels and/or upholstery to expose the **bare sheet metal**.



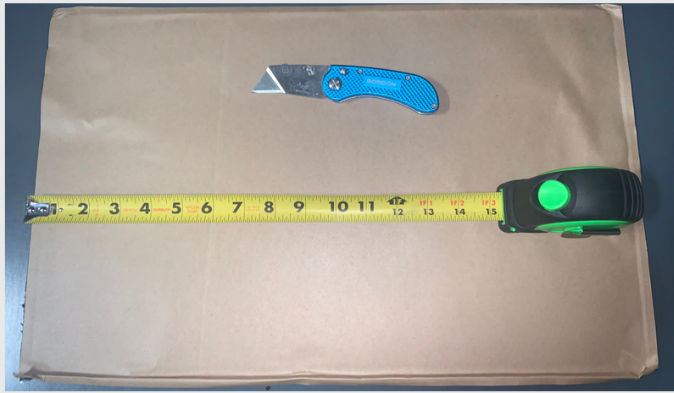
- 2 Use a rag, vacuum, and/or denatured alcohol to **remove any dust, dirt, oils, and waxy substances**. A clean surface is the start of a clean install!



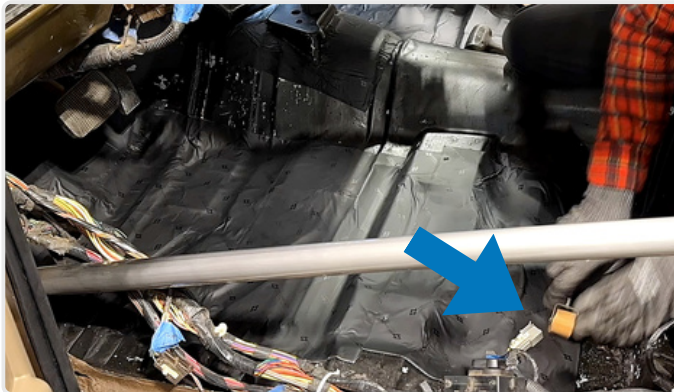
## VEHICLE SOUNDPROOFING PACKAGES

### DAMPLIFIER PRO™ + LUXURY LINER PRO™ INSTALLATION INSTRUCTIONS

- 3 Measure and cut Damplifier Pro™ mats with a utility knife to fit. Use a cardboard template if desired. We recommend **60% coverage directly on the metal**. When doing less than 100% coverage, focus your coverage on the flatter, flimsier metal (vibrates more than bent metal) and install the mats in a checkerboard pattern. Avoid mechanical and/or electrical components.



- 4 Peel the adhesive backing from the Damplifier Pro™ Mats and **press them firmly** with as much pressure and coverage as practical across the **entire bare sheet metal**. Roll over the mats with the **wooden hand roller** to remove air bubbles and **bond** the material to the **substrate**.



## VEHICLE SOUNDPROOFING PACKAGES

### DAMPLIFIER PRO™ + LUXURY LINER PRO™ INSTALLATION INSTRUCTIONS

- 5 Install the Luxury Liner Pro™ with as close to 100% coverage as possible on top of Damplifier Pro™. **Cover the cabin side firewall, floor, and trunk/cargo area including over the top of the wheel wells** (or back wall in a truck). If you have extra material, you can use it in the doors. Make any cuts with a utility knife. If you need extra bend-ability to get around a curve, make relief cuts. If you need more clearance to reattach seats or reinstall upholstery, you can shave down the foam side with a utility knife or Dremel tool.

The goal is to create an “extra wall” between yourself and the airborne noise (engine, exhaust, tire, road). **The grey foam** should face down (to the Damplifier Pro™) and the **black MLV** should face up. We recommend taping the seams for the best possible barrier. **An adhesive is required for vertical surfaces** and optional for horizontal ones. We offer spray adhesive and double sided tape as permanent adhesives and Dual Lock as a reclosable fastener option.



- 6 Reattach your door panels. Reinstall your seats and upholstery. **And enjoy your quieter vehicle!**

## VEHICLE SOUNDPROOFING PACKAGES INSTALL GUIDE

