

# Mela Mute™ Acoustic Foam

## Corner Bass Trap

SPEC SHEET

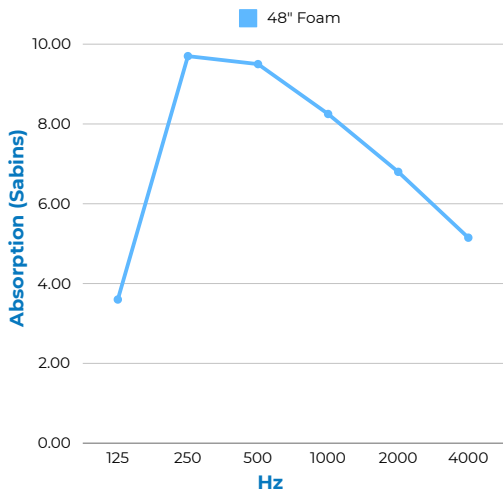
- ✓ Absorbs Low Frequencies
- ✓ Super Lightweight
- ✓ Easy to Install
- ✓ Class A Fire Rated
- ✓ Decorative & Paintable
- ✓ Non-Fibrous & No Itch



<b>Material:</b>	Open Cell Melamine Foam
<b>Patterns:</b>	Corner Bass Trap Triangular Prism, Porous, Semi-Rigid, Non-Fibrous
<b>Features:</b>	Easy to Install, Absorbs Low Frequencies, Controls Echo & Reverb, Decorative, Lightweight, Class A Fire Rated, Paintable, Non-Fibrous, Non-Toxic
<b>Application:</b>	Recording Studios, Broadcast Studios, Offices, Conference Rooms, Restaurants, Music Rooms, Universities, Hospitals, Schools, Houses of Worship, Theaters, Multi-Purpose Rooms, Government & Municipal Facilities
<b>Height:</b>	24" & 48"
<b>Dimensions:</b>	12" x 12" (outer edges)   Nominal 17" (inner edge)
<b>Weight</b>	24": 1lbs   48": 2lbs
<b>Color:</b>	White, Light Grey, Dark Grey
<b>Temperature Rating:</b>	-40°F to 350°F
<b>Flammability:</b>	ASTM E84, Class A   Flame Spread: 10   Smoke Developed: 50
<b>Installation:</b>	P329 Spray Adhesive or Construction Adhesive

## Sabins per Unit

Size	Test Mount	125 Hz	250 Hz	500 Hz	1000 Hz	2000 Hz	4000 Hz	Sabins / Unit
48" Mela Mute™ Corner Bass Trap	A-Mount	3.60	9.70	9.50	8.25	6.80	5.15	8.60



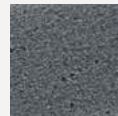
## Color Options



White



Light Grey



Dark Grey

