

CAR AUDIO DOOR KIT - LUXURY LINER PRO™

SOUND REDUCTION + MID BASS INSTALLATION INSTRUCTIONS

WHAT COMES IN THE KIT?



+



+



+



+



DAMPLIFIER PRO™

LUXURY LINER PRO™

SPEAKER TWEAKERS

HAND ROLLER

CONTACT SPRAY
ADHESIVE

INSTALLATION TOOLS

1



2



3



4



5



SHARP UTILITY KNIFE

GLOVES

ALCOHOL

MEASURING TAPE

SUPER GLUE OR
DOUBLE SIDED TAPE

OPTIONAL ADHESIVE (NOT INCLUDED)



DUAL LOCK™ RECLOSABLE FASTENER STRIPS

(CONTINUED ON NEXT PAGE)

CAR AUDIO DOOR KIT - LUXURY LINER PRO™

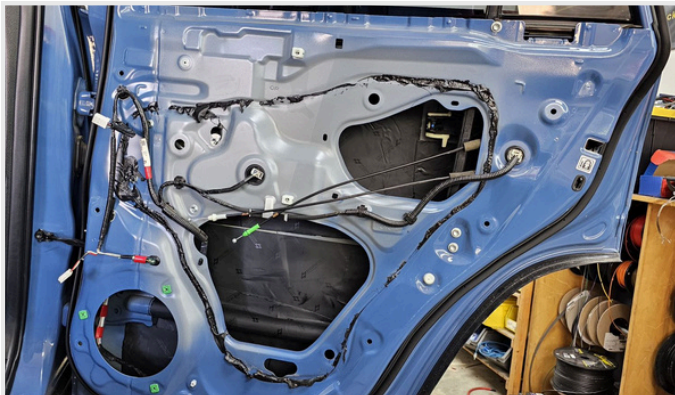
SOUND REDUCTION + MID BASS INSTALLATION INSTRUCTIONS

HOW TO INSTALL ([Watch Install Video](#))

- 1 Remove your door panels such that the **bare sheet metal** is exposed.



- 2 Clean the bare sheet metal to **remove any dirt, oils, and waxy substances** for better material adherence.

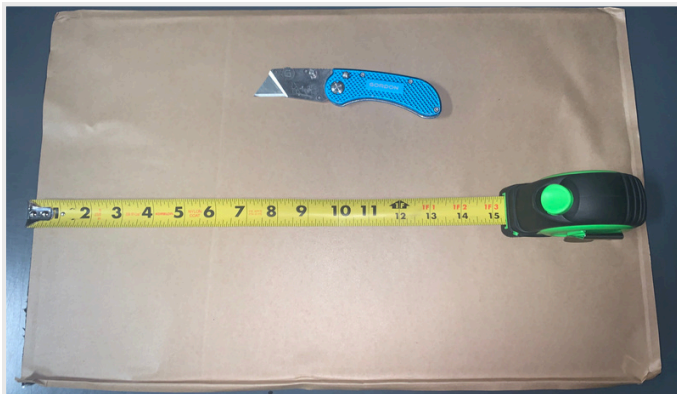


(CONTINUED ON NEXT PAGE)

CAR AUDIO DOOR KIT - LUXURY LINER PRO™

SOUND REDUCTION + MID BASS INSTALLATION INSTRUCTIONS

- 3 Measure and cut Damplifier Pro™ mats with a utility knife to fit. Use a cardboard template if desired. We recommend **60% coverage** on outer skin and **40% coverage** on inner skin (avoid mechanical and/or electrical components).



- 4 Peel the adhesive backing from the Damplifier Pro™ Mats and **press them firmly** with as much pressure and coverage as practical across the **entire bare sheet metal**. Roll over the mats with the **wooden hand roller** to remove air bubbles and **bond** the material to the **substrate**.

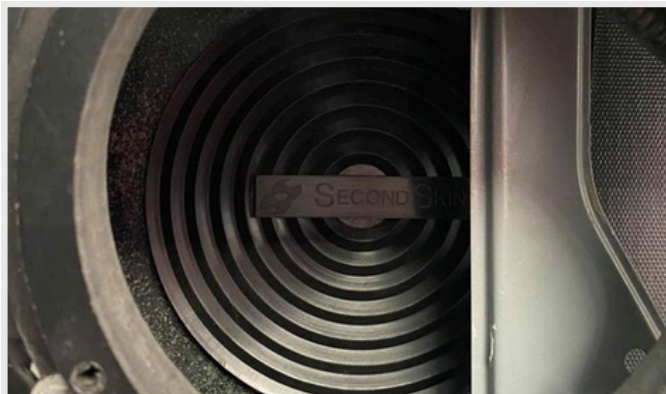


(CONTINUED ON NEXT PAGE)

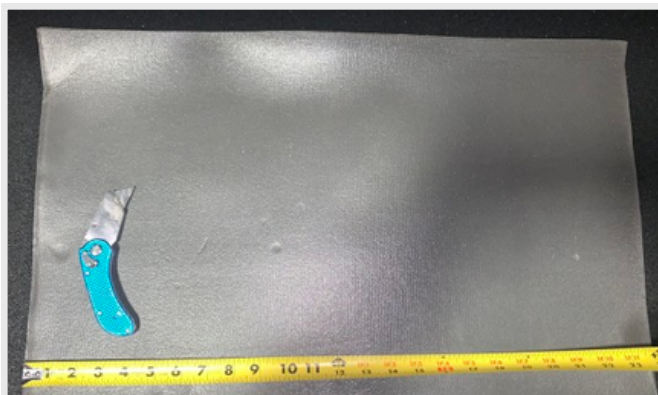
CAR AUDIO DOOR KIT - LUXURY LINER PRO™

SOUND REDUCTION + MID BASS INSTALLATION INSTRUCTIONS

- 5 Use **super glue** or **Double Sided Tape** to attach the Speaker Tweakers **directly behind** each speaker on top of the **Damplifier Pro™**.



- 6 There are two options for installing Luxury Liner Pro™ in a door. **Option #1 is to cover the outer door skin** inside the door cavity. **Option #2 is to seal the open door cavity** with Luxury Liner Pro™. For either option, you may want to create a cardboard template to use when making cuts with your utility knife.



(CONTINUED ON NEXT PAGE)

CAR AUDIO DOOR KIT - LUXURY LINER PRO™

SOUND REDUCTION + MID BASS INSTALLATION INSTRUCTIONS

- 7 **Option #1:** Install Luxury Liner Pro™ **inside the door cavity** on top of Dampifier Pro™. Use the included spray adhesive to apply Luxury Liner Pro™ with 100% coverage on the outer door skin. Once installed, **the grey foam** should face the **outer door skin** (and Dampifier Pro™) and the **black MLV** should **face you**.



- Option #2:** Use Luxury Liner Pro™ to **seal the door cavity**. This strategy will turn your door into a speaker box and improve mid-bass. We recommend the **Dual Lock™ reclosable fastener** for this install method. Once installed, the **grey foam** should face **inside** the door cavity and the **black MLV** should face you.



(CONTINUED ON NEXT PAGE)

CAR AUDIO DOOR KIT - LUXURY LINER PRO™

SOUND REDUCTION + MID BASS INSTALLATION INSTRUCTIONS

- 8 Reattach your door panels. Enjoy a quieter car and improved mid-bass!



CAR DOOR LUXURY LINER PRO™ INSTALL GUIDE